



BRICK CHIMNEY *Landing*

PREMIERE RIVERFRONT COMMUNITY

FROM THE LOW \$200'S



CENTURY 21
Sweyer & Associates

Some people dream about living on a boat, some seek adventure, some seek a quiet book on a porch swing, some about having peace and feeling connected again. Brick Chimney Landing is such a place where this and much more can be enjoyed and life can be celebrated on your terms all while enjoying your natural surroundings. We invite you to come and explore with us the many adventures you can partake in along the banks of the gorgeous Cape Fear River.



FLOOR PLANS	SQ FT	BEDS	BATHS	1ST FLOOR MASTER
The Addison	2,443 Sq Ft	4/5	2.5	Yes
The Addison II	2,683 Sq Ft	4/5	2.5	Yes
The Anderson	2,231 Sq Ft	4/5	2.5	No
The Arthur	1,782 Sq Ft	3	2.5	Yes
The Arthur II	1,806 Sq Ft	3	2.5	Yes
The Caroline	2,002 Sq Ft	4	2.5	No
The Katelyn	2,487 Sq Ft	3/4	2.5	No
The Kimber-Lily*	2,016 Sq Ft	3/4	2	Yes
The Lauren	2,459 Sq Ft	3	2	Yes
The Savannah	1,767 Sq Ft	3	2.5	No
The Savannah II	2,037 Sq Ft	4	2.5	No



*Winner! 2018 Parade of Homes!

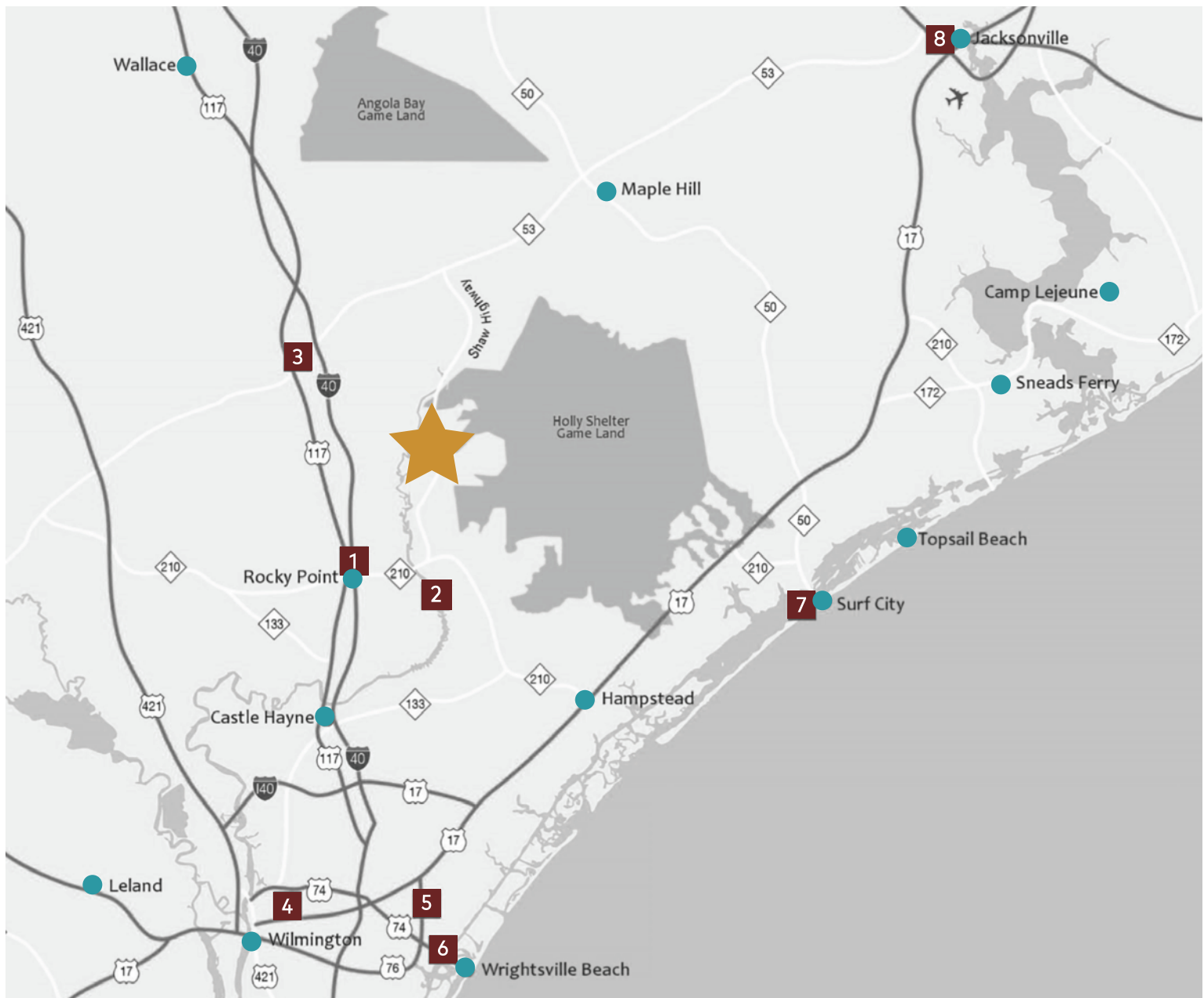


Allison Ruby
Broker/REALTOR®

Direct: 910.367.5110 Office: 910.256.0021
aruby@century21sweyer.com

CENTURY 21
Sweyer & Associates

Each office is independently owned and operated



Brick Chimney Landing is located on a high bluff along the banks of the beautiful Cape Fear River in Rocky Point NC, situated just 15 minutes north of Wilmington.

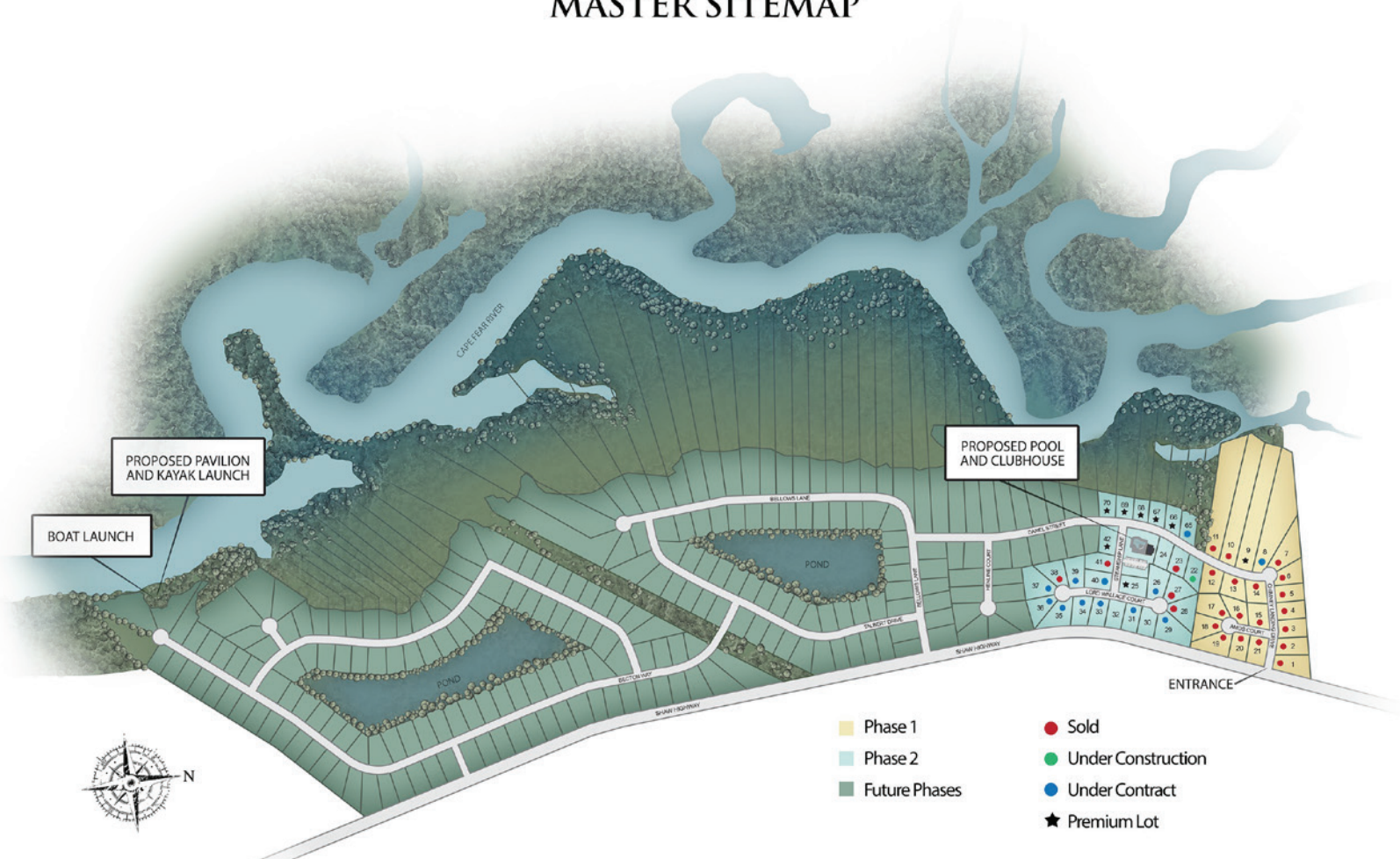
- 1 5 minutes to Food Lion and I-40, Rocky Point
- 2 6 minutes to Northeast Cape Fear River access
- 3 14 minutes to Walmart Supercenter
- 4 18 minutes to Wilmington International Airport
- 5 20 minutes to Mayfaire Town Center
- 6 24 minutes to Wilmington, Wrightsville Beach
- 7 25 minutes to Surf City
- 8 35 minutes to Jacksonville

PHASE ONE IS ALMOST SOLD OUT!



BRICK CHIMNEY *Landing*

MASTER SITEMAP



PLANNED AMENITIES INCLUDE:

- Community pool and clubhouse
- Northeast Cape Fear Riverfront with:
 - Gazebo
 - Pavilion
 - Boat launch

STANDARD FEATURES

INTERIOR

- *Granite Counter Tops in Kitchen
- *9' Ceilings Upstairs/Downstairs
- *Soft Closing Drawers/Pulls in Kitchen
- *Stainless Steel Appliances
- *Pull down Multifunction Kitchen Faucet
- *Factory Built Cabinetry with Hard Wood Faced Frames
- *Brushed Nickel Door Pull Hardware
- *Digital Thermostat
- *LVP Flooring Kitchen, Dining, Living & Laundry Room
- *Sherwin Williams Interior Paints
- *Fan/Light Fixture in MBR & Living Room on Separate Switches
- *Media/Networking Panel (Lo-Volt)
- *Access to AT&T Fiber Optics Service
- *Carpeted Bedrooms & Stairs
- *Spacious Bedroom Closets with Lights
- *All bedrooms Pre-Wired for Ceiling/Light/ Fan with Separate Switches (Fan optional in Guest Rooms)
- *Cultured Marble Bathroom Counter Tops with Integral Sinks
- *Moen Faucets in Bathrooms
- *Walk-In Shower in Master Bathrooms

EXTERIOR

- *Stone or Brick Accent in Front of House
- *(3) Sets of Decorative Shutters
- *Carriage Garage Door with (2) Remote Openers
- *Finished Garage Interior with Drywall and Paint
- *(2) Car Garage with Double Width Driveway to Street
- *Flood Lights in Front/Rear of Home
- *Complete Gutter System
- *Low Maintenance Vinyl Siding
- *Architectural 30 Year Shingles
- *Bermuda Sod in Front of Home with Irrigation System
- *10x12 Concrete Patio at Rear Entrance
- *(3) Standard Flush Mount Outdoor Receptacles
- *(2) Water Hose Hook-ups

TECHNICAL

- *Entire House Water Shut off in Garage
- *Copper Stub-Out Plumbing for Supply Valves
- *Soffit/Ridge Vent (Attic Ventilation)
- *All Wall Framing 16" on Center
- *Blocking in Walls – Straight Walls
- *Low Maintenance PVC Column Wraps
- *Concrete Splash Block for Gutters
- *Factory Engineered Stairs – Some Models
- *Solid wood Trim (NOT MDF (Medium Density Fibreboard))
- *R-15 Walls, R-38 Ceiling, R-19 Floor



OPTIONAL UPGRADES

- Shiplap accent Wall or Kitchen Island
- Coffered Ceiling
- Decorative Barn Door
- Gas Fire Place or Stove
- Tiled Master Walk-In Shower
- Custom Coat/Boot Rack in Laundry Room
- Covered Back Porch, 6x6 Grill Pad
- Screening existing Back Porch
- Water Softener
- Appliances – Dryer, Washer, Side by Side Refrigerator
- Side Door Entrance on Garage
- 6' Shadow Box Wood Fence or Board on Board
- Single or Double Gate
- Rubbed Bronze Plumbing Fixtures
- Glass Shower Door
- 6" Can Lights
- Additional Bathroom in Bonus Room
- Irrigation/Sod to Back Yard
- Extended Width of Driveway

UTILITIES:

- Four Points EMC – Electric - 1-888-368-7289
- Well Water/Individual Septic
- AT&T Fiber Optics - WiFi

BUILDER/DEVELOPER:

BCL Homes - Trent Talbert & Jeff Pitts

Trent Talbert – Brick Chimney Landing is a historical property that has been in Trent's family for over 60 years. After enjoying the land for all of those years, his family decide to allow others to appreciate the beauty and serenity of the Northeast Cape Fear River as much as they have. Developing the land and partnering with Jeff Pitts on quality built homes was a perfect next step in a career that has always been about cultivating land.

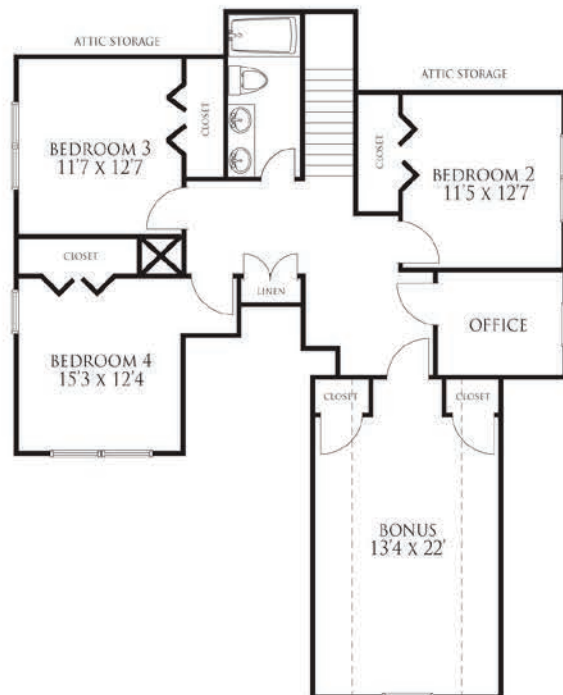
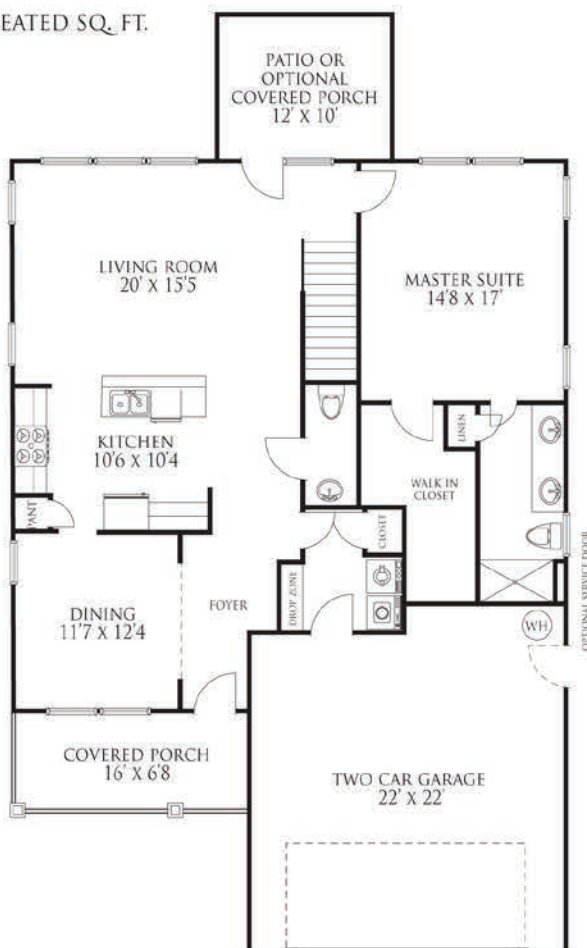
Jeff Pitts – An established custom home builder, Jeff, has been working New Hanover, Pender and Onslow counties since 2001. His objective has always been to build with the quality materials, hire precise sub-contractors, and allow flexibility in order to make sure he achieves his clients dream home. His latest vision of wanting to create a custom feel in a community development has him partnering with Trent Talbert to create BCL Homes.



The Addison



2443 HEATED SQ. FT.



BCL HOMES

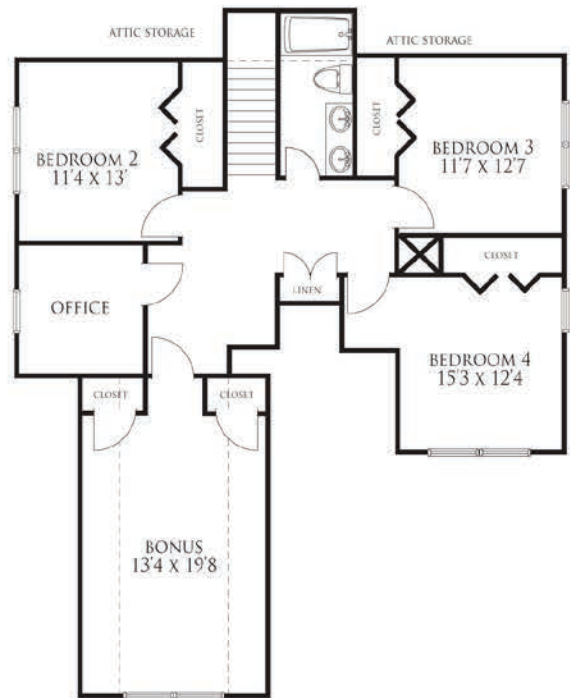
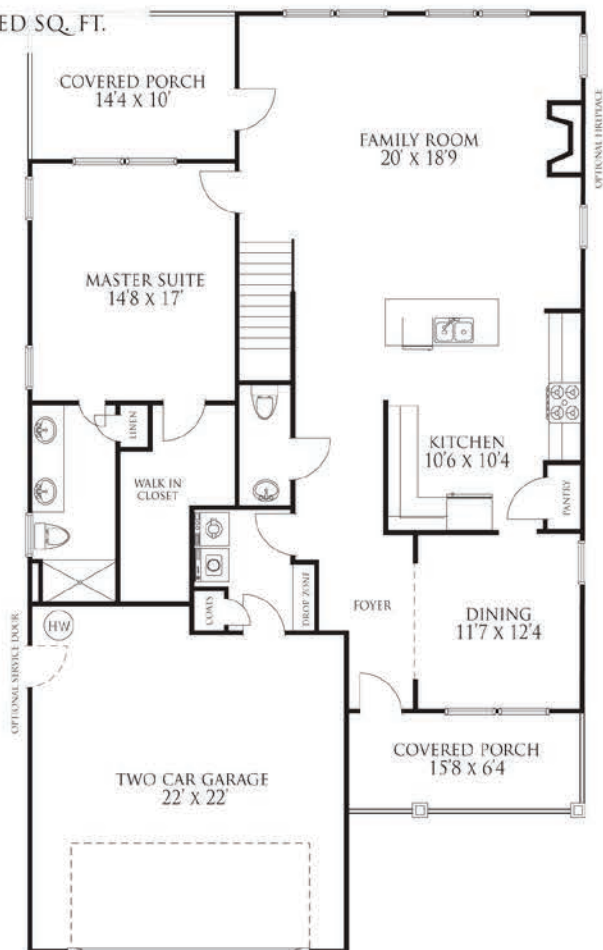
Artist's representation only. Plans may differ depending on the modifications performed by the builder. May vary from these drawings.



The Addison II



2683 HEATED SQ. FT.



BCL HOMES

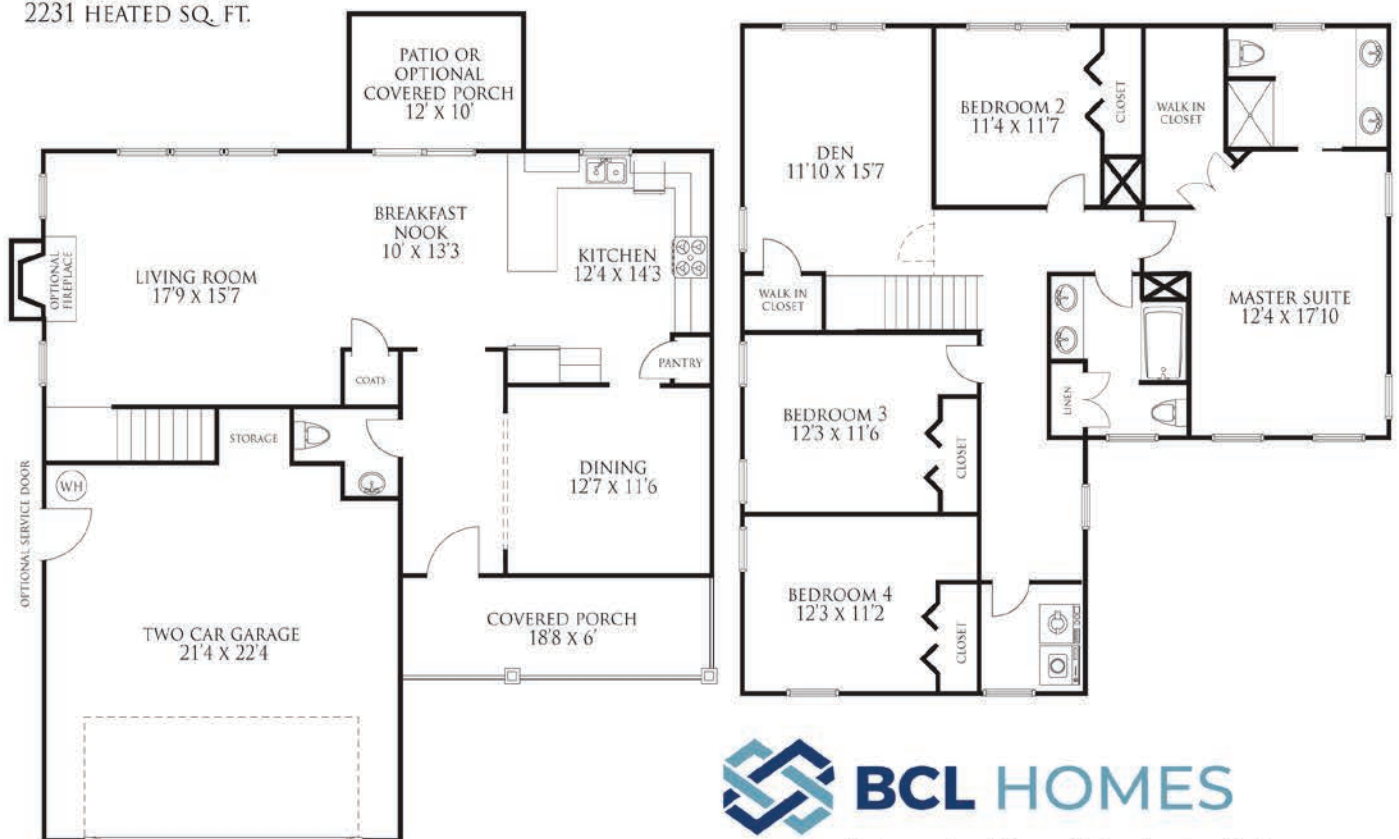
Artist's representation only. Plans may differ depending on the modifications performed by the builder. May vary from these drawings.



The Anderson



2231 HEATED SQ. FT.



BCL HOMES

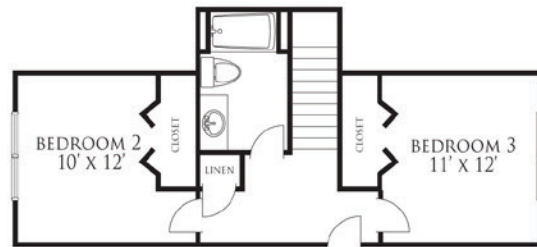
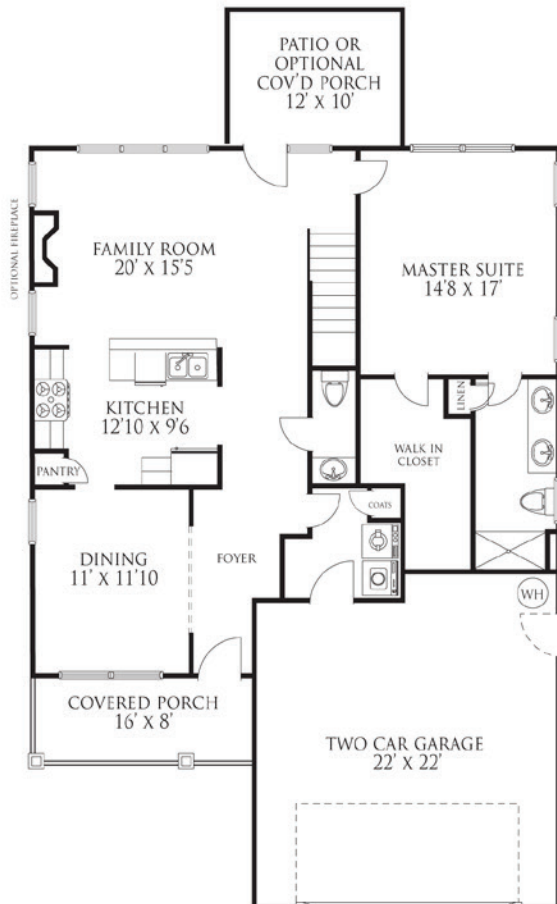
Artist's representation only. Plans may differ depending on the modifications performed by the builder. May vary from these drawings.



The Arthur



1782 HEATED SQ. FT. WITH BONUS



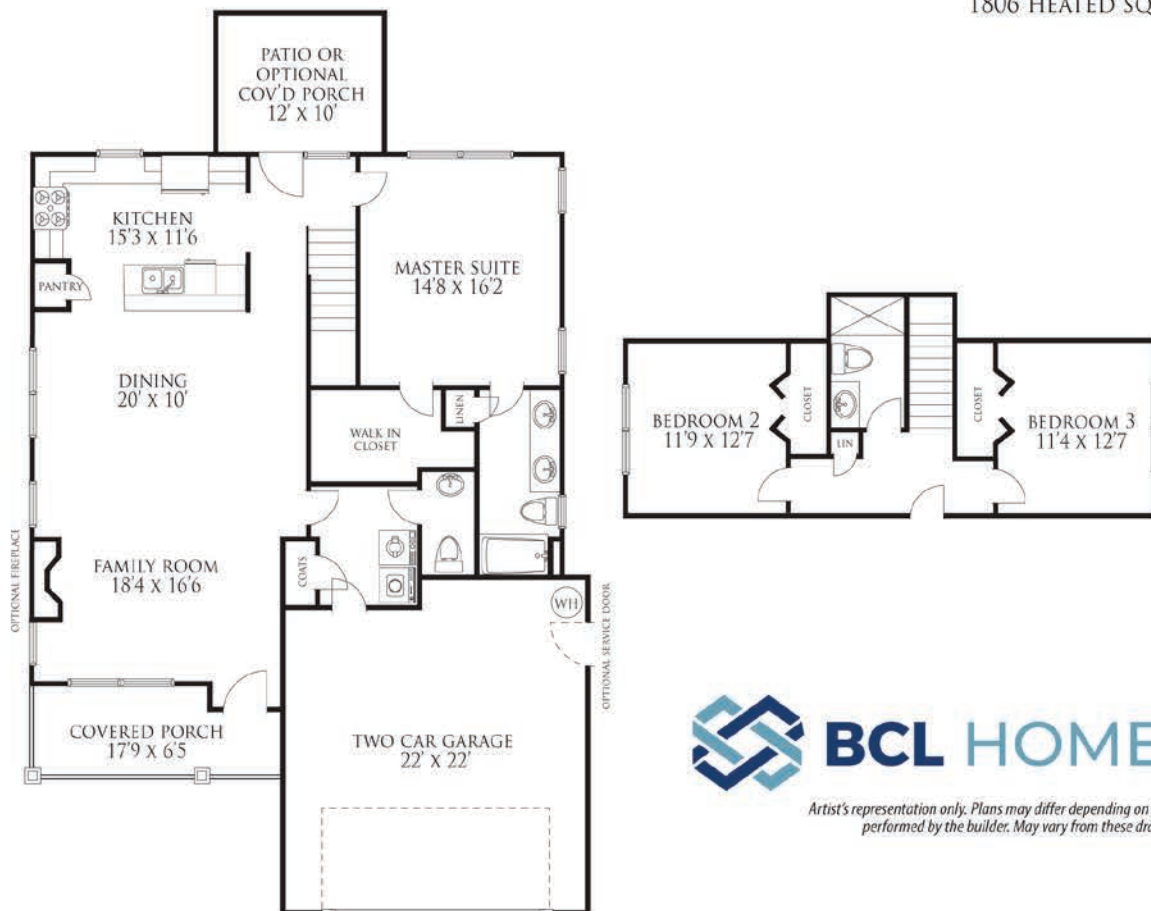
Artist's representation only. Plans may differ depending on the modifications performed by the builder. May vary from these drawings.



The Arthur 2



1806 HEATED SQ. FT.



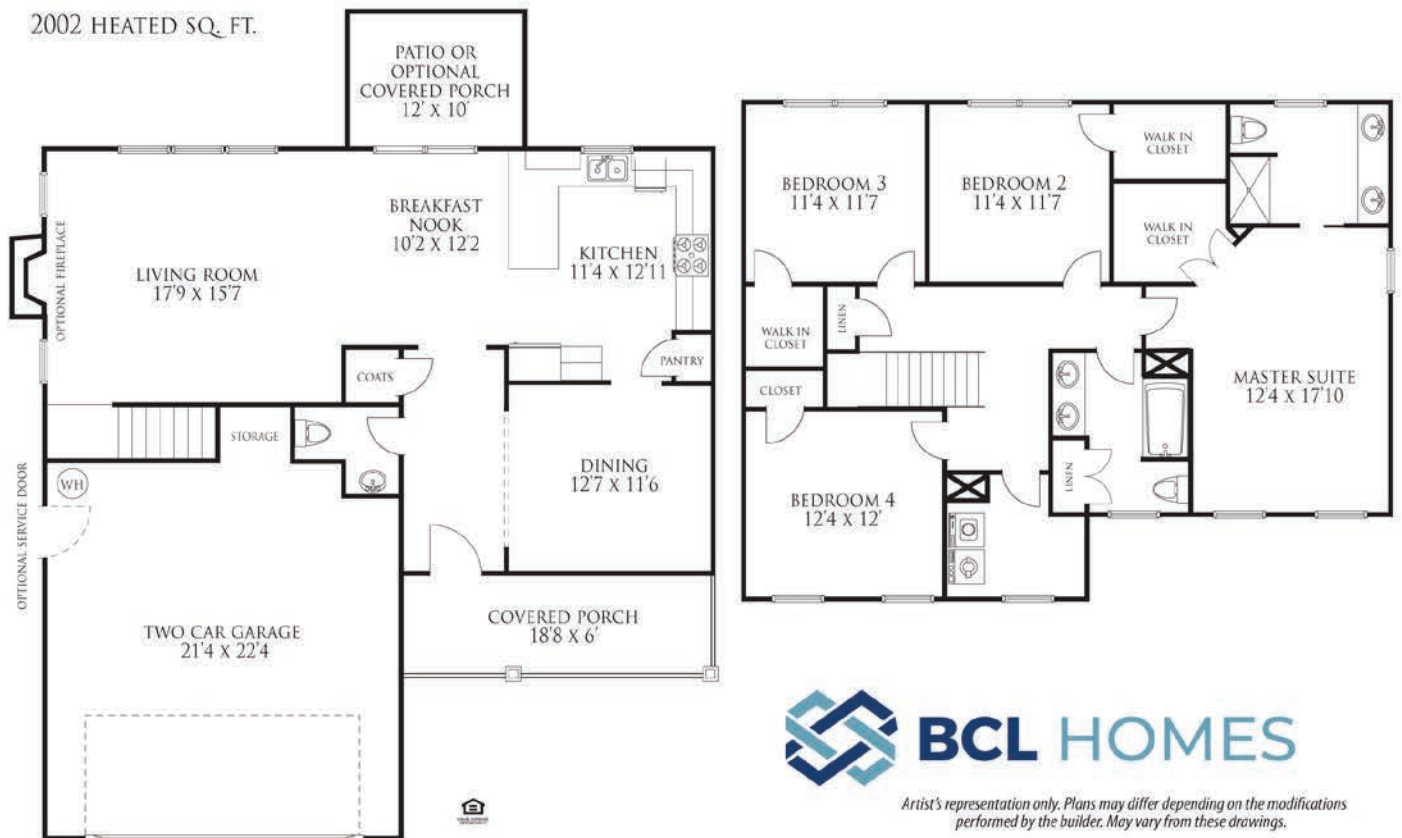
Artist's representation only. Plans may differ depending on the modifications performed by the builder. May vary from these drawings.



The Caroline



2002 HEATED SQ. FT.

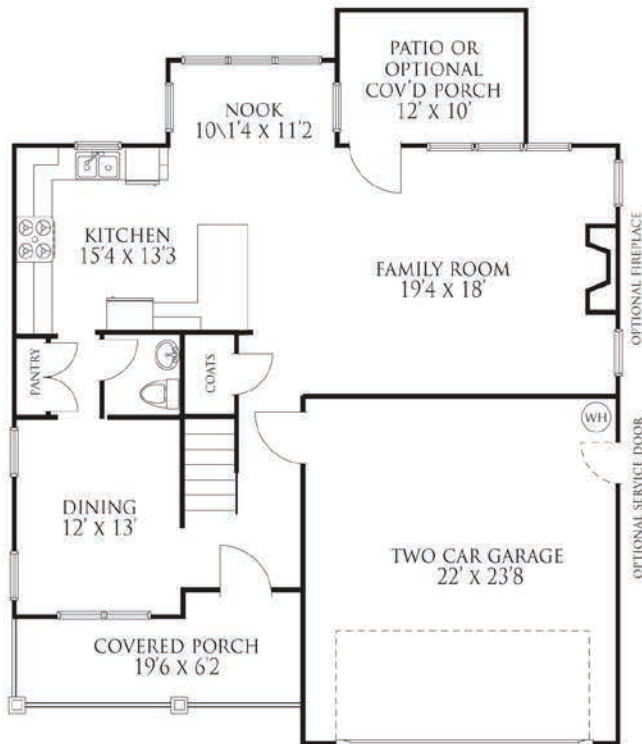


Artist's representation only. Plans may differ depending on the modifications performed by the builder. May vary from these drawings.

The Katelyn



2321 HEATED SQ. FT.



2,371



Artist's representation only. Plans may differ depending on the modifications performed by the builder. May vary from these drawings.

The Kimber-Lily



2,016 HEATED SQ. FT.



BCL HOMES

Artist's representation only. Plans may differ depending on the modifications performed by the builder. May vary from these drawings.



The Lauren

*OPTIONAL DECORATIVE DORMER



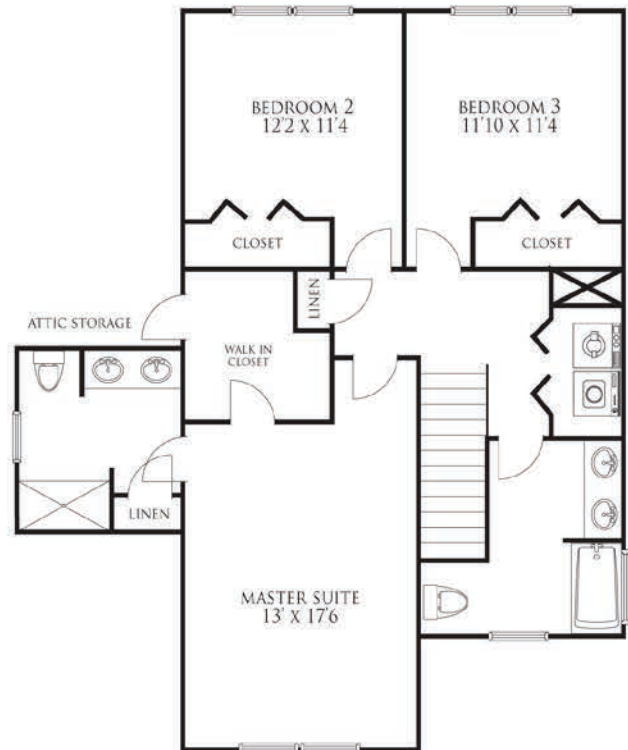
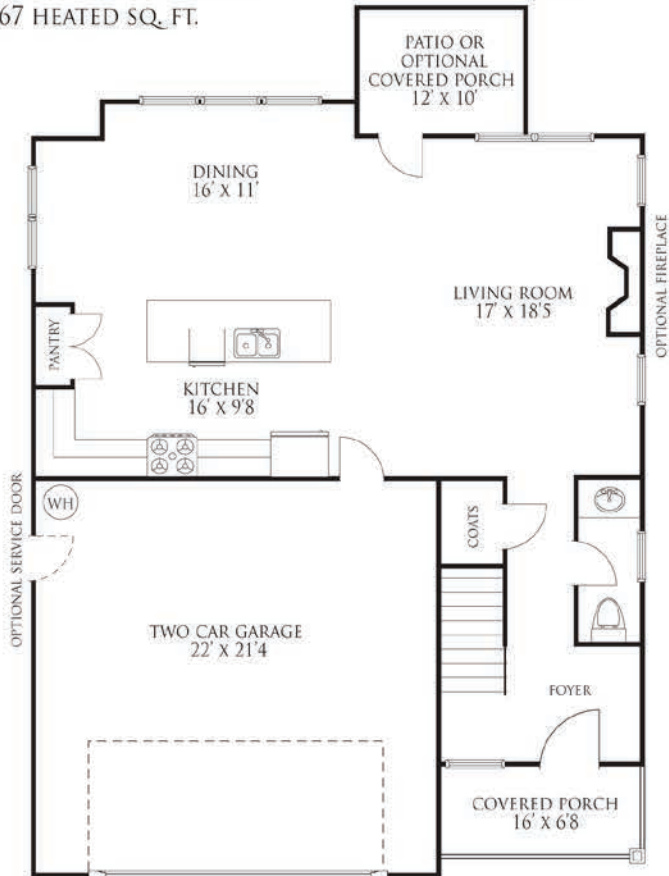
Artist's representation only. Plans may differ depending on the modifications performed by the builder. May vary from these drawings.



The Savannah



1767 HEATED SQ. FT.

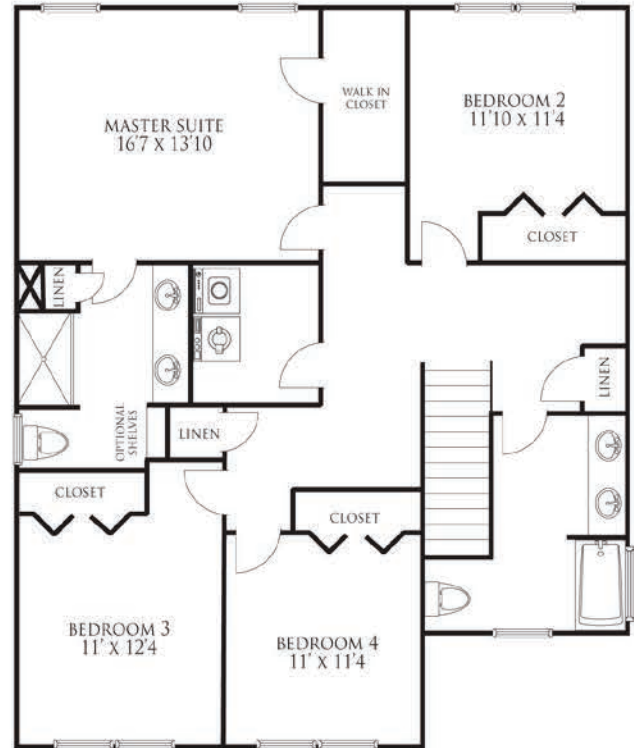
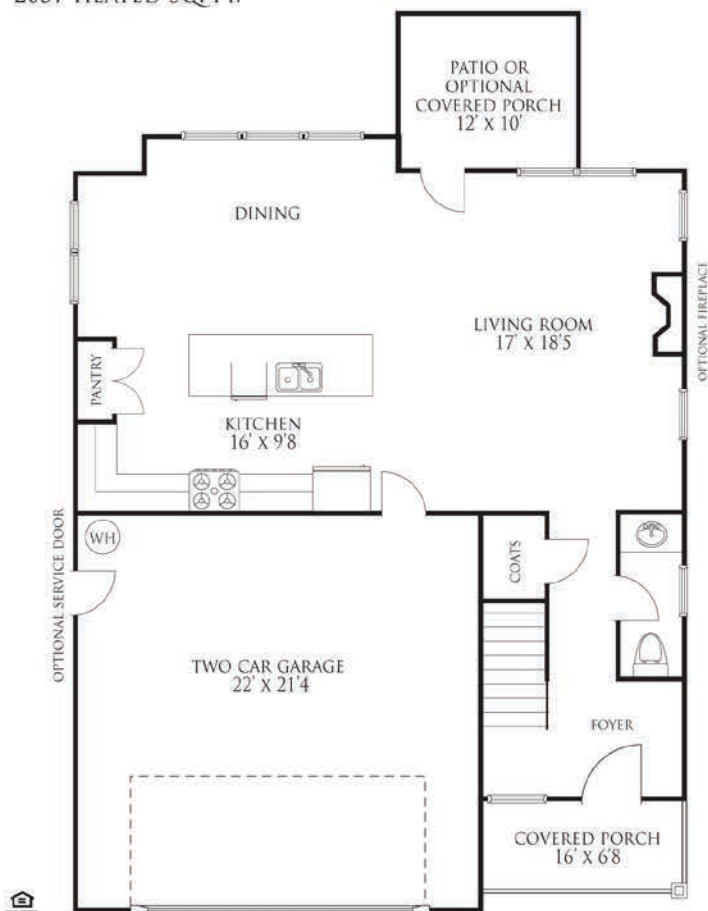


Artist's representation only. Plans may differ depending on the modifications performed by the builder. May vary from these drawings.

The Savannah II



2037 HEATED SQ. FT.



 **BCL HOMES**

Artist's representation only. Plans may differ depending on the modifications performed by the builder. May vary from these drawings.